

# ROBBIE WADGE

VIVA  
models



Height: 185 cm [6' 07"] | B/W/H: -- -- -- [0" 0" 0"] | Size: -- | Shoes: 43 | Hair: brown | Eyes: blue

# ROBBIE WADGE



Height: 185 cm [6' 07"] | B/W/H: -- -- -- [0" 0" 0"] | Size: -- | Shoes: 43 | Hair: brown | Eyes: blue

# ROBBIE WADGE



Height: 185 cm [6' 07"] | B/W/H: -- -- -- [0" 0" 0"] | Size: -- | Shoes: 43 | Hair: brown | Eyes: blue

# ROBBIE WADGE



**ETRO** Racer jacket in beige woven lambskin. Sizes S-XXXL. Italy. \$3,995. Scarf in beige/rust paisley-pattern cashmere/silk. Italy. \$675. Five-pocket jeans in wheat cotton/elastane. Sizes 30-38. Italy. \$520. Third Floor. Jeans also at [BG.com](http://BG.com). Watch and bracelet, see page 232.



**MP DI MASSIMO PIOMBO** Three-button notch-lapel sport jacket and flat-front trousers in black/white houndstooth linen crêpe. Sizes 46-54. Italy. Jacket \$2,495. Trousers \$625. Shirt in blue/white stripe silk with spread collar. Sizes 38-43. Italy. \$695. Tie in blue/black crosshatch-jacquard silk. Italy. \$295. Pocket square in purple/black bandana-print silk. Italy. \$95. Scarf in navy/white dot-pattern silk. Italy. \$295. Third Floor. Bracelet, see page 232.

Height: 185 cm [6' 07"] | B/W/H: -- -- -- [0" 0" 0"] | Size: -- | Shoes: 43 | Hair: brown | Eyes: blue

# ROBBIE WADGE



Height: 185 cm [6' 07"] | B/W/H: -- -- -- [0" 0" 0"] | Size: -- | Shoes: 43 | Hair: brown | Eyes: blue

# ROBBIE WADGE



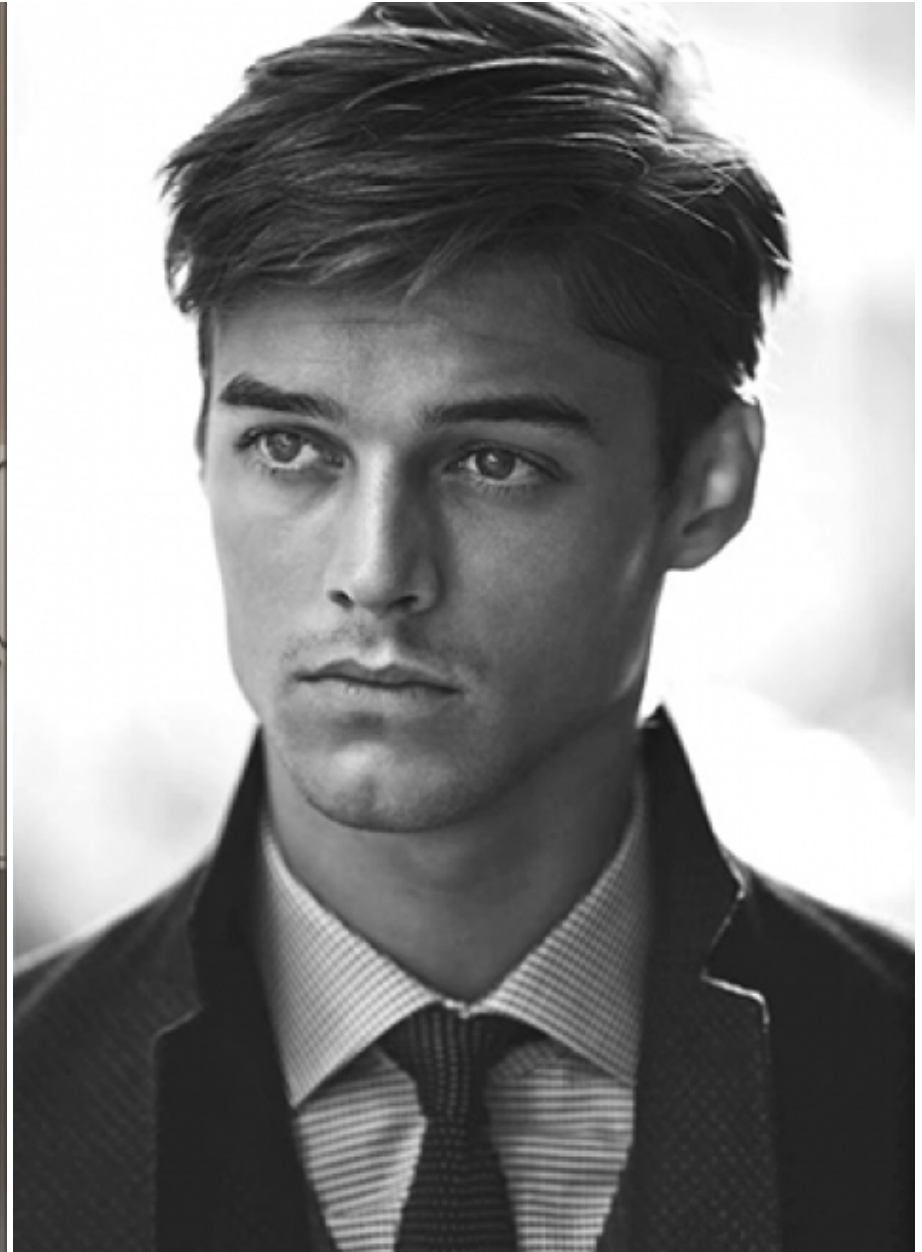
Height: 185 cm [6' 07"] | B/W/H: -- -- -- [0" 0" 0"] | Size: -- | Shoes: 43 | Hair: brown | Eyes: blue

# ROBBIE WADGE



Height: 185 cm [6' 07"] | B/W/H: -- -- -- [0" 0" 0"] | Size: -- | Shoes: 43 | Hair: brown | Eyes: blue

# ROBBIE WADGE



Height: 185 cm [6' 07"] | B/W/H: -- -- -- [0" 0" 0"] | Size: -- | Shoes: 43 | Hair: brown | Eyes: blue



# ROBBIE WADGE



Height: 185 cm [6' 07"] | B/W/H: -- -- -- [0" 0" 0"] | Size: -- | Shoes: 43 | Hair: brown | Eyes: blue